

L EWA OPTION

MOTORISED WHEEL OPTION EWA

OPTIONS ADAPTED TO YOUR INDUSTRY

Discover our EWA option, a motorised wheel for hand-pulled lifter, to help the operator move around and optimise and improve your productivity while guaranteeing enhanced safety.

With its compact, discreet design, our option fits perfectly with our R.205 lifter. Its integrated control button in the handle offers intuitive operation, making it easy to grasp and providing a user-friendly interface for an optimum operator experience. The ergonomic control minimises fatigue and makes it easier to handle heavy loads.

EWA reduces muscular effort, avoiding the risk of injury. With its soft start, operator-controlled speed and anti-crush reverse system, every manoeuvre is carried out with complete peace of mind.

➤ BENEFITS

- Retrofittable to R.205 steel models
- Anti-crushing safety device
- ErgoControl handle
- Manually controlled speed
- No need for CACES
- CE certified by BUREAU VERITAS
- Foam protection on brake bar



Move



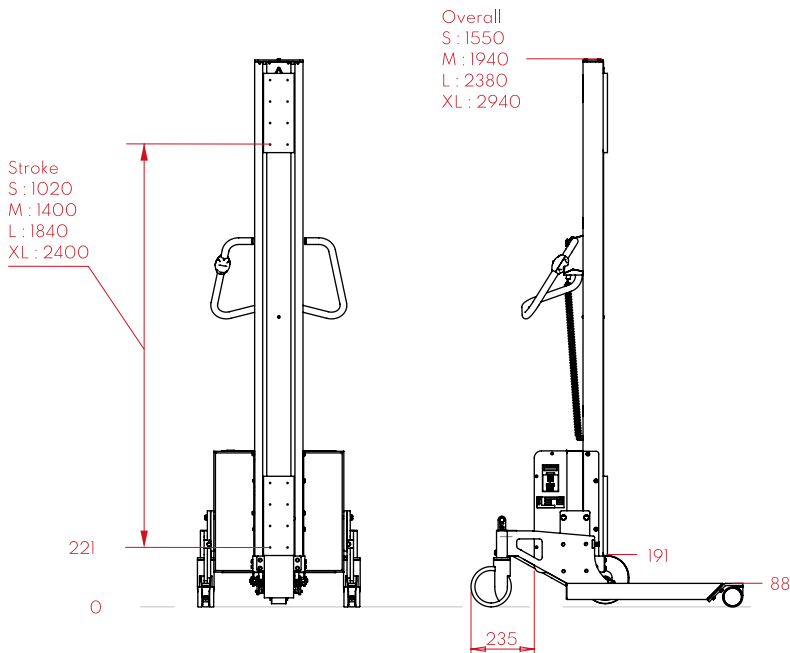
GARANTIE
1 AN



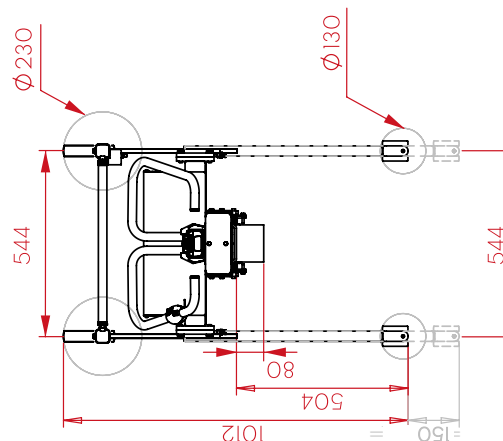
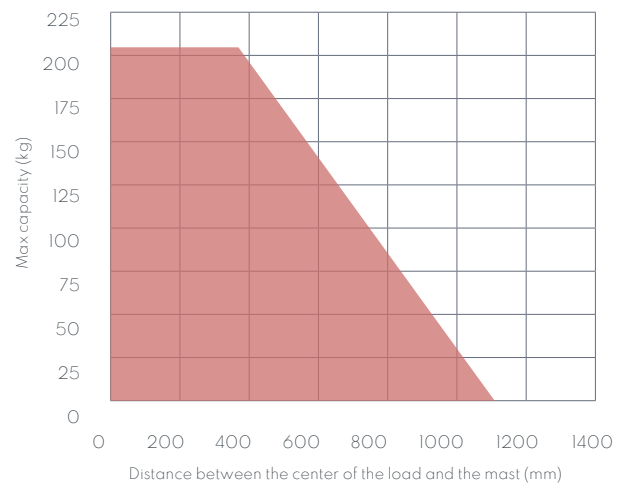
Specifications

Description	
Rubber material	Polyurethane
Wheel diameter	160 mm
Forward speed	0.75 m/s
Reverse speed	0.4 m/s
Motor	Brushless
Additional recharge time	Lithium : + 3,5h Plomb : + 8h
Additional weight on the lifter	Lithium : + 18 kg Plomb : + 22 kg

Technical drawings



Load diagram



Contact us:
02 28 21 73 95
info@reglift.fr

Visit our website:
www.reglift.fr

REGLIFT
ZAC La Belle Etoile - 19, rue Saturne
44119 Grandchamp-des-Fontaines